

cultural agenda

MADEIRA
FEBRUARY .09



Department of Cultural Affairs
Regional Secretariat for Education and Culture

DRAC



“Estreito - The concept”



At the end of February the Centro Cívico of the Estreito de Câmara de Lobos opens the exhibition: “Estreito - The concept”, which brings together seven installation works, being six of them individual works and one a partnership project. Having as starting point the landscapes of the Estreito de Câmara de Lobos, the artists David Atouguia, Domingas Pita, Graça Berimbau, Laura Feteira, Martin Mendes, Sílvio Cró, Paulo Sérgio Beju and Teresa Jardim, interpret the city’s landscape by using diversified materials, colours and techniques.

People, symbols, beliefs, metaphors and traditions are reinvented.

Overcoming the prejudice, always inaccessible, “narrow”, these artists resize reality, by presenting the Municipality of Câmara Lobos as it is, preserving the places memory and authenticity. “Estreito - The concept”, an exhibition to visit till the end of April.



exhibitions



Until February 7th

“phg”

Plastic arts collective exhibition by
Guida Ferraz, Helena Sousa and
Patrícia Sumares

Associarte Gallery

Campanário Centrum Club

Monday to Friday: 9.00 a.m. to 8.00 p.m.

Saturdays: 9.00 a.m. to 1.00 p.m. and
from 2.00 p.m. to 7.00 p.m.

www.adcampanario.pt.vu

Until February 11th

“Fraction of a second”

Photo exhibition by Ricardo Alves

Casa da Cultura de Santa Cruz

Quinta do Revoredo

Monday to Friday: 9.30 a.m. to 5.30 p.m.



Until February 28th

**Painting and drawing exhibition by
Paulo Brighenti**

Porta 33 Art Gallery

Rua do Quebra Costas, 33 – Funchal

Tuesday to Saturday: 4.00 p.m.

to 8.00 p.m.



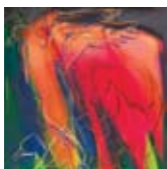
Until March 4th

“Fellini / Lisbon”

Photo exhibition by Danilo Pavone

Fnac Gallery

Madeira Shopping



Until March 29th

“Madeira – Malta, Portuguese plastic arts expression”

Collective exhibition of the artists who attend the Malta Biennial

Casa das Mudas Gallery - Calheta

Tuesday to Sunday: 10.00 a.m. to 1.00 p.m. and from 2.00 p.m. to 6.00 p.m.

Until April 26th

“Wickerworks – Cestaria”

Exhibition within the project: “Access to the reservation’s room”

Madeira Ethnographic Museum – Atrium

Rua de São Francisco, 24 - Ribeira Brava

Tuesday to Sunday: 10.00 a.m. to 12.30 p.m. and from 2.00 p.m. to 6.00 p.m.

Project: Madeira Ethnographic Museum

February 2nd to March 1st

“The forest within the municipality of Santa Cruz”

Itinerant photo exhibition/ Regional Forests Board

February 2nd to 8th

Casa do Povo do Santo da Serra

February 9th to 15th

Casa do Povo da Camacha

February 16th to 22nd

Casa do Povo de Gaula

February 23rd to March 1st

Casa do Povo do Caniço

February 11th to March 31st

“Between the pages: the book and the book-marker”

Cultural Centre John Dos Passos
– Temporary exhibition’s room

February 27th to May 31st

Collective art exhibition, which gathers all the prize-winning works from the different editions of the Casa das Mudas Art’s Competition - Henrique and Francisco Franco Prize

Centre of Arts – Casa das Mudas Calheta

Tuesday to Sunday: 10.00 a.m. to 1.00 p.m. and from 2.00 p.m. to 6.00 p.m.

Permanent Exhibition

Emperor Charles of Austria in Madeira

Casa dos Romeiros – Monte

Monday to Friday: 10.00 a.m. to 3.00 p.m.



music / dance



February 6th > 9.30 p.m.

Grand concert of Baroque music: Ensemble Vocal Regina Pacis, Chamber Choir, Consort Bisel and String Orchestra from Madeira’s Department of Artistic Education

The concert is part of the Year “Vieirino” celebrations

Colégio Church - Funchal

February 6th, 13th, 20th and 27th

> 9.00 p.m.

Madeira Mandolin Orchestra

English Church – Funchal



February 7th > 9.00 p.m.

**Concert for two pianos with
Bernardo Sasseti and Mário
Laginha**

Centre of Arts – Casa das Mudas
Calheta



February 8th > 4.00 p.m.

Accordion Orchestra

Music group from Madeira's
Department of Artistic Education
Centro Cívico – Arco de São Jorge



February 13th > 9.30 p.m.

"Associação Amigos do Conservatório
de Música da Madeira" presents:

Saint Valentine's Serenade

Franco Mezzena, violin (Italy)

Francesco Monopoli, piano (Italy)

Works by Beethoven, Dvorák, Kreisler,
Schumann and Ravel

Baltazar Dias Municipal Theatre

February 15th > 4.00 p.m.

**Mandolin orchestra and mandolin
musical group from
Madeira's Department of Artistic
Education**

Santa Cruz Parochial hall



**Dance group from Madeira's
Department of Artistic Education**

> 5.00 p.m.

Seixal Parochial Hall



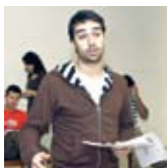
February 27th > 9.00 p.m.
**Concert with Paulo de Carvalho,
accompanied on the piano**
Centre of Arts – Casa das Mudas
Calheta



February 28th > 9.30 p.m.
**Consort Bisel and Percussion
Ensemble from Madeira's
Department of Artistic Education**
Porto Santo Congress Centre



theatre



Until February 8th
"Ao Vivo e a Soro"
Stand-up comedy
Actor: Pedro Ribeiro
Performances in English > 5.00 p.m.
Performances in Portuguese > 9.30 p.m.
Baltazar Dias Municipal Theatre



February 13th and 14th > 9.30 p.m.
"Crossed plays"
Juvenile theatre group from Madeira's
Department of Artistic Education
Centre of Arts - Casa das Mudas
Calheta

Note: we regret to inform our foreign readers that these play is exclusively performed in Portuguese.



conferences

February 13th and 15th

“Art history themes of the 20th century”

Concept and supervision: Delfim Sardo

February 13th > 5.00 p.m. to 7.00 p.m.

February 14th > 11.00 a.m. to 1.00 p.m.
and from 2.30 p.m. to 4.30 p.m.

February 15th > 11.00 a.m. to 1.00 p.m.

Choupana Hills Hotel

Note: we regret to inform our foreign readers that these conferences are exclusively held in Portuguese.



other events



February 4th, 11th, 18th and 25th

“Astronomy within Funchal’s community”

Film screening on the theme:

Astronomy > 5.00 p.m.

Conference about astronomy
> 7.00 p.m.

Observation room > 9.00 p.m.

At the following parishes:

February 4th

São Roque Parish

February 11th

São José Centre

February 18th

Monte Parish

February 25th

Centro Cívico - Santa Luzia

“Astronomy and the society”

Itinerant exhibition

February 2nd to 13th

Casa da Cultura de Câmara de Lobos

February 16th to 27th

Centro Cívico - Estreito de Câmara de Lobos

Events within the International Year of Astronomy 2009

February 7th > From 9.00 a.m. to 2.00 p.m.

Collecting Market

Rua 31 de Janeiro, 79 – Funchal

Org.: Direcção Regional de Juventude

<http://juventude.gov-madeira.pt/>



February 14th and 15th > 3.00 p.m.

“Festa dos Compadres”

Santana

Org.: Santana Town Hall

February 20th to March 20th

Headwear competition (Carnival)

Madeira Ethnographic Museum

- Exhibition's room

All Works should be delivered until February 19th

Project coordination: Museum Educational Services



February 21st to 24th

Carnival Festivities

February 21st > 9.00 p.m.

Great Carnival Parade

February 24th > 4.00 p.m.

Shrove Tuesday – Fun Parade

Org.: Official Tourism Board



February 23rd > 2.30 p.m.

“Carnival masks for everyone”

Carnival Atelier

Regional Public Library

www.bprmadeira.org



municipality of culture



> music

February 8th > 10.00 a.m.

"Si Que Brade"

Music group from Madeira's
Department of Artistic Education
Centro Cívico – Curral das Freiras

> theatre

February 12th and 13th

"While the city rests"

February 12th > 3.00 p.m.

February 13th > 11.00 a.m.

Mime and theatre group – "Oficina
Versus" from the social integration nu-
cleus for art /DREER – Special educa-
tion and rehabilitation department
Centro Cívico – Estreito de Câmara
de Lobos

Note: we regret to inform our foreign
readers that this play is exclusively
performed in Portuguese.

> exhibitions

From February 17th

“Solid stone, shaped stone”

Painting and installation exhibition by Miguel Vieira

Casa da Cultura de Câmara de Lobos

February 27th till late April

“Estreito – The concept”

Art installation by David Atouguia, Domingas Pita, Graça Berimbau, Laura Feteira, Martinho Mendes, Sílvio Cró, Paulo Sérgio Beju and Teresa Jardim
Centro Cívico – Estreito de Câmara de Lobos

> other events

February 22nd > 4.00 p.m.

Carnival Parade

Estreito de Câmara de Lobos – Vila

February 23rd > 9.30 p.m.

Carnival Parade

Câmara de Lobos



archives and libraries

Madeira’s Regional Archives

Caminho dos Álamos, 35 - Funchal

Reading Room: Monday to Thursday
from 9.30 a.m. to 7.45 p.m.

Saturdays: 9.30 a.m. to 3.00 p.m.

Certificate Issuance: Monday to Friday
from 10.00 a.m. to 4.00 p.m.

www.arquivo-madeira.org

Regional Public Library

Caminho dos Álamos, 35 - Funchal

Reading Room:

Monday from 2.00 a.m. to 8.00 p.m.

Tuesday to Friday from 9.30 a.m. to 8.00 p.m.

Saturdays: 9.30 a.m. to 3.00 p.m.

Children's Lounge:

Monday from 2.00 a.m. to 8.00 p.m.

Tuesday to Friday from 9.30 a.m. to 8.00 p.m.

Saturdays: 9.30 a.m. to 3.00 p.m.

Special reading room for the visually impaired:

Mondays and Wednesdays: closed

Tuesday, Thursday and Friday from

9.30 a.m. to 8.00 p.m.

www.bdcmadeira.org

Foreign Cultures Library

Rua Dr. Pita

Quinta Magnólia - Funchal

Monday to Friday from 9.00 a.m. to 5.30 p.m.

Funchal's Municipal Library

Palácio de São Pedro

Rua da Mouraria, 35 - Funchal

Monday to Friday from 10.00 a.m. to 8.00 p.m.

Calouste Gulbenkian

Municipal Library

Municipal Theatre Baltazar Dias

Avenida Arriaga - Funchal

Monday to Friday from 9.00 a.m. to

12.30 p.m. and from 2.00 p.m. to 7.00 p.m.

Library/Documentation Centre - Contemporary Art Museum

Rua do Portão de São Tiago - Funchal

Monday to Saturday from 10.00 a.m. to

12.30 p.m. and from 2.00 p.m. to 5.30 p.m.

Centre for the Documentation of Contemporary Art

John Dos Passos Library

John Dos Passos Cultural Centre

Rua Príncipe D. Luís, 3 - Ponta do Sol

Monday to Friday from 9h00 a.m. to 12h30

p.m. and from 2h00 p.m. to 5h00 p.m.

Madeira's Parliament Library

Avenida do Mar e das Comunidades

Madeirenses - Funchal

Monday to Friday from 9.00 a.m. to 12.00

o'clock and from 2.00 p.m. to 5.00 p.m.

European Affairs Library

CERNE - "Casa da Europa na Madeira"

Rua Latino Coelho, 57, 3º - Funchal

Monday to Friday from 9.00 a.m. to 12.30

p.m. and from 2.00 p.m. to 5.30 p.m.

Funchal's Information and Documentation Centre

Regional Directorate of Youth

Rua 31 de Janeiro, 79 - Funchal

Monday to Friday from 9.30 a.m.

to 8.00 p.m.

Saturdays from 9.00 a.m. to 12.30 p.m.

Investigation and Documentation Centre

Madeira's Department of Artistic Education

Travessa do Nogueira, 11 - Funchal

Documentation Centre specialised in Music, Education and Arts

Monday to Friday from 9.00 a.m. to 12.30

p.m. and from 2.00 p.m. to 5.30 p.m.

Fernando Augusto Theatre-theca
Theatre and Performative Art's Library
Teatro Experimental do Funchal
Rua do Hospital Velho, 42 - Funchal
Monday to Friday from 4.00 p.m.
to 7.00 p.m.
(Book in advance: Tel. 291226747)



museums

Contemporary Art Museum

Rua do Portão de São Tiago - Funchal
Monday to Saturday from 10.00 a.m. to
12.30 p.m. and from 2.00 p.m. to 5.30 p.m.

Madeira Ethnographic Museum

Rua de São Francisco 24 - Ribeira Brava
Tuesday to Sunday from 10.00 a.m. to
12.30 p.m. and from 2.00 p.m. to 6.00 p.m.
Sunday: Free Entrance



Christopher Columbus House, Porto Santo Museum

Travessa da Sacristia, 2 e 4 - Porto Santo
Tuesday to Saturday from 10.00 a.m. to
12.30 p.m. and from 2.00 p.m. to 5.30 p.m.
Sundays from 10.00 a.m. to 1.00 p.m.
www.museucolombo.portosanto.com



Museum of Sacred Art

Rua do Bispo 21 - Funchal
Tuesday to Saturday from 10.00 a.m. to
12.30 p.m. and from 2.30 p.m. to 6.00 p.m.
Sundays from 10.00 a.m. to 1.00 p.m.

Vicentes Photography Museum

Rua da Carreira 43 - 1º - Funchal

Monday to Friday from 10.00 a.m. to 12.30 p.m. and from 2.00 p.m. to 5.00 p.m.



House-Museum Frederico de Freitas

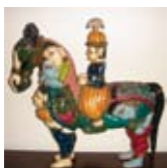
Calçada de Santa Clara, 7 - Funchal

Tuesday to Saturday from 10.00 a.m. to 5.30 p.m.

Quinta das Cruzes Museum

Calçada do Pico 1 - Funchal

Due to construction works and for safety reasons the museum is temporarily closed.



Universe of Memories - João Carlos Abreu

Calçada do Pico, 2 - Funchal

Tuesday to Saturday from 10.00 a.m. to 5.00 p.m.

Mário Barbeito de Vasconcelos Library Museum

Avenida Arriaga, 48 - Funchal

Monday to Friday from 10.00 a.m. to 6.30 p.m.

Saturday from 10.00 a.m. to 1.00 p.m.



São Francisco Wine Lodges

Avenida Arriaga, 28 - Funchal

Monday to Friday: 9:30 a.m. to 6.30 p.m.

Saturdays: 10.00 a.m. to 1.00 p.m.

Whale Museum

Largo Manuel Alves - Caniçal

Tuesday to Sunday from 10.00 a.m. to 12.00 o'clock and from 1.00 p.m. to 6.00 p.m.

Natural History Museum

Quinta do Meio / Bom Sucesso
- Funchal

Monday to Sunday from 9.00 a.m.
to 5.30 p.m.



Sugar Museum

Praça Colombo, 5 - Funchal

Monday to Friday from 10.00 a.m. to
12.30 p.m. and from 2.00 p.m.
to 6.00 p.m.



Henrique and Francisco Franco Museum

Rua João de Deus, 13 - Funchal

Monday to Friday from 10.00 a.m. to
12.30 p.m. and from 2.00 p.m. to 6.00 p.m.

São Lourenço Palace

Avenida Zarco - Funchal

Wednesday at 10.00 a.m.;

Friday at 3.00 p.m.;

Saturday at 11.00 a.m.;

(Visits on different day and hours must
be booked in advance)

Madeira Wine Institute Museum

Rua 5 de Outubro, 78 - Funchal

Closed

www.sra.pt/ivm



Embroidery Museum

Rua Visconde Anadia, 44 - Funchal

Monday to Friday from 10.00 a.m. to
12.30 p.m. and from 2.00 p.m. to 5.30 p.m.

Municipal Museum of Funchal

Palácio de São Pedro

Rua da Mouraria, 31- Funchal

Tuesday to Friday from 10.00 a.m.
to 6.00 p.m.

Saturdays, Sundays and Bank Holidays
from 12.00 o'clock to 6.00 p.m.

Mary Jane Wilson Museum

Rua do Carmo, 61 - Funchal

Tuesday to Friday from 10.00 a.m. to 12.00 o'clock and from 3.00 p.m. to 5.00 p.m.
Saturday from 10.00 a.m. to 12.00 o'clock
Last Sunday of the month from 3.00 p.m. to 5.00 p.m.



Toy Museum

Rua da Levada dos Barreiros, 48
- Funchal

Tuesday to Saturday from 10.00 a.m. to 6.00 p.m.
Sundays from 10.00 a.m. to 1.30 p.m.

Electricity Museum - Casa da Luz

Rua da Casa da Luz, 2 - Funchal

Tuesday to Saturday from 10.00 a.m. to 12.30 p.m. and from 2.00 p.m. to 6.00 p.m.



Santa Clara Convent

Calçada de Santa Clara, 15 - Funchal

Monday to Saturday from 10.00 a.m. to 12.00 o'clock and from 3.00 p.m. to 5.00 p.m.
Sundays from 10.00 a.m. to 12.00 o'clock

Military Museum

Avenida Zarco - Funchal

Monday to Saturday from 9.30 a.m. to 12.00 o'clock and from 2.00 p.m. to 5.30 p.m.

Monte Palace Museum

Caminho das Babosas, 4 - Funchal

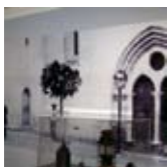
Monday to Sunday: 10.30 a.m. to 3.30 p.m.
www.montepalace.com

Vineyard and Wine Museum of Arco de São Jorge

Sítio da Lagoa - Arco de São Jorge
Tuesday to Sunday from 10.30 a.m.
to 5.30 p.m.
Monday morning - by reservation

Madeira Story Centre

Rua D. Carlos I, 27 e 29 - Funchal
Monday to Sunday from 9.00 a.m. to 7.00 p.m.
www.storycentre.com



Museological Nucleus of Machico Solar do Ribeirinho

Rua do Ribeirinho - Machico
Monday to Friday from 9.00 a.m. to
12.30 p.m. and from 2.00 p.m. to 5.30 p.m.



thematic centres



Madeira Theme Park

Estrada Regional 101
Fonte da Pedra - Santana
Open every day from 10.00 a.m. to 7.00 p.m.
www.parquetematicodamadeira.pt

Centre of Life Science

Rotunda do Ilhéu Mole - Porto Moniz
Tuesday to Sunday 10.00 a.m. to 7.00 p.m.
www.ccvportomoniz.com

Madeira Magic Centre

Rua da Ponta da Cruz, 25 - Funchal
Tuesday to Friday from 10.00 a.m.
to 6.00 p.m.
Saturdays and Sundays from 10.00 a.m.
to 6.00 p.m.
www.madeiramagic.com

São Vicente Caves and Volcanism Centre

Sítio do Pé do Passo - São Vicente
Monday to Sunday from 10.00 a.m.
to 7.00 p.m.

www.grutasecentrodovulcanismo.com



Madeira Aquarium

Rua do Forte de São João Baptista
- Porto Moniz

Monday to Sunday from 10.00 a.m.
to 6.00 p.m.



Reception and Interpretation Centre of Funchal's Ecological Park

Estrada Regional 103

Ribeira das Cales, 259 - Monte

Monday to Sunday from 9.00 a.m.
to 5.30 p.m.

www.cm/funchal.pt

Cover detail

"Estreito – The concept"

Exhibition within the Municipality of
Culture celebrations

Centro Cívico – Estreito de Câmara
de Lobos

Back Cover detail

Grand concert of baroque music

Year "Vieirino" celebrations

Colégio Church – Funchal

cultural agenda

FEBRUARY .09

Edition

Secretaria Regional de Educação e Cultura

Direcção Regional dos Assuntos Culturais

Rua dos Ferreiros, 165

9004-520 Funchal

E-mail: geral.drac@madeira-edu.pt

Contacts

E-mail: agendacultural@madeira-edu.pt

Tel.: 291 211 830 / 96 7819284

Fax: 291 237 136

Design Als Design

Printing O Liberal

Print Run 500 copies

The Department of Cultural Affairs is entirely responsible for all enclosed information.

Programme changes might occur due to unforeseen reasons.

