

cultural agenda

MADEIRA
NOVEMBER .07





exhibitions



«To make the drawing speak by itself»

With its opening foreseen for the 9th of November 2007 at the Contemporary Art Museum, in Funchal, this exhibition gathers a group of works by seven young Portuguese artists, including the Madeiran Rui Carvalho, sibe by side with André Banha, Jorge Feijão, Nuno Franco, Luís Nobre, Paulo Tuna and João Tengarrinha.

Mr. João Miguel Fernandes Jorge is the exhibition's sponsor and author of the text in the catalogue that will have a limited edition.

These artists's exhibit a collection of drawings and express different ways of understanding their practice and all together they might create analogies and familiarities.

Until January 12th 2008
Contemporary Art Museum
Funchal

Until 4th November
“Painting 2004/2007”

Exhibition by Eduardo de Freitas
Associarte Art Gallery
Campanário Centrum Club

Est.^a Dr. Francisco Justino Gonçalves
de Andrade, 30 - Campanário

Monday to Friday: 9.00 a.m. to 8.00 p.m.

Saturday: 9.00 a.m. to 1.00 p.m. and from
2.00 p.m. to 7.00 p.m.

Org.: Campanário Sports Association



Until 15th November
“Madeira – Savage Islands”

InfoArt Exhibition Room
Art Gallery of the Regional
Secretariat for Tourism and Transports

Avenida Arriaga, 20 - Funchal

Monday to Friday: 10.00 a.m.

to 12.00 p.m. and 3.00 p.m. to 5 p.m.

Org.: Regional Secretariat for Tourism
and Transports

Support: Regional Secretariat for
Education and Culture / Department
of Cultural Affairs

Until 20th November
“Folklore through the painter’s
brush”

Painting by Lilía Santos and Project
by Isabel Sousa

Vale Inn - São Vicente

Sculpture exhibition by Rogério
Abreu and Painting exhibition
by Vasco Torres

Mouraria Art Gallery

Rua da Mouraria, 38 - Funchal

Monday to Friday: 10.00 a.m. to 1.00 p.m.
and from 3.00 p.m. to 7.00 p.m.

Saturday: 10.00 a.m. to 1.00 p.m.

www.galeriamouraria.com



Until 29th November
“Shearing”

Photography Exhibition by David
Francisco

Centro Cívico - Ponta do Pargo

Org.: Madeira Ethnographic Museum



**“Origins of vegetable food
- Promotion and symbolism”**

Centre of Agrarian Training
Santa Cruz

Org.: Madeira Ethnographic Museum

Until 30th November

“fotoGRAFAR”

Collective Photo Exhibition

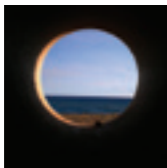
The exhibition is part of the
Municipality Day celebrations of
Câmara de Lobos

Casa da Cultura de Câmara de Lobos

Rua São João de Deus, 40

Câmara de Lobos

Monday to Friday from 9.00 a.m.
to 5.30 p.m.



Until 30th November

Plastic Arts Collective Exhibition

Porta 33 Art Gallery

Rua do Quebra-costas, 33 - Funchal

Tuesday to Saturday: 4.00 p.m. to 8.00 p.m.

**Sculpture exhibition by Jacinto
Rodrigues**

Centro Cívico – Porto da Cruz

“Firstlings”

Photo Exhibition

Members of the Photograph Club

– School Padre Manuel Álvares, Ribeira
Brava - class of 2001/02

Centre of Agrarian Training

São Vicente

Org.: Madeira Ethnographic Museum

**“Savage Islands – The Bird’s
Paradise”**

Photo Exhibition

Centre of Life Science

Rotunda do Ilhéu Mole

Porto Moniz

Tuesday to Sunday: 10.00 a.m. to 7.00 p.m.

**Org.: Portuguese Society for Bird
Study (SPEA) and Porto Moniz Centre
of Life Science (CCVPM)**

www.ccvportomoniz.com

“Marine Reserves of Madeira Archipelago”

Photo Exhibition

São Vicente Caves and Volcanism Centre

Sítio do Pé do Passo

São Vicente

Monday to Sunday: 10.00 a.m. to 7.00 p.m.

Org.: Natural Park of Madeira

www.grutasecentrodovulcanismo.com



“Living Science in Mathematics – Platonic Solids”

Photo Exhibition

Centre of Life Science

Org.: Apel School and Porto Moniz

Centre of Life Science



Until 2nd December

Painting Exhibition by António Inverno

Casa das Mudas Art Gallery

Centre of Arts – Casa das Mudas

Calheta

Tuesday to Sunday: 10.00 a.m. to 13.00

p.m. and from 2.00 p.m. to 6.00 p.m.



Until 4th December

“Madeiran arts and crafts - tradition and innovation”

Centre of Agrarian Training – Preces

Câmara de Lobos

Org.: Madeira Ethnographic Museum

Until 9th December

Traditional Crafts – The Shoe Shiner

Exhibition within the project:

“Access to the collections in the reservation’s room”

Org.: Madeira Ethnographic Museum

Rua de São Francisco, 24

Ribeira Brava

Tuesday to Saturday: 10.00 a.m.

to 12.30 p.m. and from 2.00 p.m.

to 6.00 p.m.



Celebrating the National Day for Water

“Memories of the water. The water and the edified heritage”

Madeira Ethnographic Museum -

Exhibitions Room

Org.: Madeira Ethnographic Museum

Until 31st December
Clay Exhibition by Teresa Pavão
House Museum Christopher
Columbus

Travessa da Sacristia, 2 / 4
Porto Santo

Tuesday to Saturday: 10.00 a.m.
to 12.30 p.m. and from 2.00 p.m.
to 5.30 p.m.

Sunday: 10.00 a.m. to 1.00 p.m.

www.museucolombo.portosanto.com

**“Fishing gear and wine cellar tools
from Madeira”**

Handicrafts Exhibition

São Vicente Caves and Volcanism
Centre

Org.: São Vicente Caves and
Volcanism Centre



**“Discovering the Indigenous Plants
of Laurissilva Forest”**

Centre of Life Science

Org.: Porto Moniz Centre of Life
Science

Until 2nd March 2008

**“Berardo Collection: Body and
Matter, Five Artists
in Madeira”**

Centre of Arts - Casa das Mudas
Calheta

Tuesday to Sunday: 10.00 a.m. to 13.00
p.m. and from 2.00 p.m. to 6.00 p.m.

November 8th – 10th December
“Retrospective”

Painting Exhibition by Maria Freitas
AssociArte Gallery

Campanário Centrum Club

November 9th to January 12th, 2008
Collective Drawing Exhibition
Contemporary Art Museum of Funchal
São Tiago Fortress

Rua do Portão de São Tiago
Funchal

Monday to Saturday: 10.00 a.m.
to 12.30 p.m. and from 2.00 p.m.
to 5.30 p.m.

**Permanent Exhibition
Emperor Charles of Austria
in Madeira**

“Casa dos Romeiros”

Monte

Monday to Friday: 10.00 a.m.
to 5.00 p.m.



music



3rd November > 9.00 p.m.

Madeira Classical Orchestra presents:

**Complete Cycle of Beethoven’s
Symphonies**

Madeira Casino Auditorium

4th November

“Si Que Brade”- Madeira’s

Department of Artistic Education

> 5.00 p.m.

Ribeira de Machico Auditorium

Madeira Classical Orchestra presents:

“Madeira Camerata” > 5.00 p.m.

Cultural Centre John Dos Passos
- Auditorium

Ponta do Sol

7th November > **9.00 p.m.**

Madeira Classical Orchestra presents:

“RGGB”

Madeira Casino Auditorium



9th, 16th, 23rd and 30th November

> 9.00 p.m.

Madeira Mandolin Orchestra

English Church

Funchal

11th November

Madeira Classical Orchestra presents:

**Educational Services – Painting
music** > 10.00 a.m. to 3.00 p.m.

Madeira Casino Auditorium



**Brass Ensemble - Madeira's
Department of Artistic Education**

> 5.00 p.m.

Madeira Ethnographic Museum
Ribeira Brava

Madeira Classical Orchestra presents:

Madeira Winds > 2.00 p.m.

Centre of Life Science
Porto Moniz

14th November > 9.00 p.m.

Madeira Classical Orchestra presents:

Madeira Winds

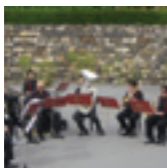
Madeira Casino Auditorium

17th November

**Chamber Choir - Madeira's
Department of Artistic Education**

> 8.00 p.m.

Casa do Povo da Ilha
Santana



Madeira Classical Orchestra

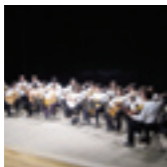
> 9.00 p.m.

Madeira Casino Auditorium

18th November

**"Dixieband"- Madeira's Department
of Artistic Education** > 3.00 p.m.

Parish Hall
Santana



**Guitar Ensemble - Madeira's
Department of Artistic Education**

> 4.00 p.m.

Casa do Povo de Boaventura

21st November > 9.00 p.m.

Madeira Classical Orchestra presents:

"Ensemble XXI"

Madeira Casino Auditorium



24th November > 9.30 p.m.

**Juvenile Choir and Vocal Ensemble
"Regina Pacis" - Madeira's
Department of Artistic Education
Carmo Church
Funchal**



25th November

Madeira Classical Orchestra presents:
**Educational Services – "Sing with
me"** > 10.00 a.m. to 12.00 p.m.
Madeira Casino Auditorium



**Juvenile Choir - Madeira's
Department of Artistic Education**
> 5.00 p.m.
São Martinho Church

**"Si que Brade" - Madeira's
Department of Artistic Education**
> 7.00 p.m.
Casa da Cultura de Câmara de Lobos

Madeira Classical Orchestra presents:
"Madeira Clássico"
Santana

28th November > 9.00 p.m.

Madeira Classical Orchestra presents:
"RGGB"
Madeira Casino Auditorium

theatre

16th to 18th November
“Oditrévnió” by Madeira’s
Department of Artistic Education
16th > 3.00 p.m.
17th > 9.00 p.m.
18th > 6.00 p.m.
Centre of Arts -Casa das Mudas
Calheta

other events



2nd to 10th November
3rd International Cinema Festival
of Funchal
The event is part of the celebrations
programme - Funchal 500 years
Municipal Theatre Baltazar Dias
Org.: Cinema Cooperative “Plano XXI”

3rd November > 10.00 a.m. to 3.00 p.m.
46th Collecting Market
Regional Department of Youth
Rua 31 de Janeiro, 79
Funchal
Monday to Friday: 10.00 a.m. to 5.00 p.m.
Org.: Regional Department of Youth
<http://juventude.gov-madeira.pt/>

4th November > 3.00 p.m.
Madeira’s 20th Meeting of Choir
Groups
Sports Arena - Calheta
Org.: Choir Group from Arco
da Calheta

18th to 25th November
13th Cultural Week of the Ilha
Centro Cívico da Ilha
Santana
Org.: Casa do Povo da Ilha



Municipality of Culture

> music

16th November > 9.00 p.m.

**Wind Orchestra - Madeira's
Department of Artistic Education
Cultural Centre John Dos Passos
- Auditorium
Ponta do Sol**

> dance

23rd, 24th and 25th November

"Dancing with the difference"

On the 23rd

Schools > 10.00 a.m. / 3.00 p.m.

On the 24th and 25th

Cultural Centre John Dos Passos

- Auditorium > 9.00 p.m. / 6.00 p.m.

Ponta do Sol

> exhibitions

Until 31st December

"Newspaper's land"

Cultural Centre John Dos Passos

- Atrium

Ponta do Sol

> other events

"My municipality...Ponta do Sol"

Pedagogical initiative towards

students of the 6th and 10th grades

Basic and Secondary School of Ponta
do Sol

Org.: Madeira's Regional Archive

- Educational Services



archives and libraries

Madeira's Regional Archives

Caminho dos Álamos, 35 - Funchal

Reading Room: Monday to Thursday
from 10.00 a.m. to 7.30 p.m.

Certificate Issuance: Monday to Friday
from 10.00 a.m. to 4.00 p.m.

www.arquivo-madeira.org

Regional Public Library

Caminho dos Álamos, 35 - Funchal

Reading Room: Monday from
2.00 p.m. to 7.30 p.m.

Tuesday to Friday from 10.00 a.m.
to 7.30 p.m.

Children's Lounge: Monday from
2.00 p.m. to 7.30 p.m.

Tuesday to Thursday from 10.00 a.m.
to 7.30 p.m.

Fridays: Closed

Special Reading Room: Mondays
and Wednesdays: closed

Tuesday, Thursday and Friday from
10.00 a.m. to 7.30 p.m.

www.bdcmadeira.org

Foreign Cultures Library

Rua Dr. Pita

Quinta Magnólia - Funchal

Monday to Friday from 9.00 a.m.
to 5.30 p.m.

Funchal's Municipal Library

Palácio de São Pedro

Rua da Mouraria, 35 – Funchal

Monday to Friday from 10.00 a.m.
to 8.00 p.m.

Calouste Gulbenkian

Municipal Library

Municipal Theatre Baltazar Dias

Avenida Arriaga – Funchal

Monday to Friday from 9.00 a.m.
to 12.30 p.m. and from 2.00 p.m.
to 7.00 p.m.

Library/Documentation Centre - Contemporary Art Museum

Rua do Portão de São Tiago - Funchal

Monday to Saturday from 10.00 a.m.
to 12.30 p.m. and from 2.00 p.m.
to 5.30 p.m.

Madeira's Parliament Library

Avenida do Mar e das Comunidades
Madeirenses – Funchal

Monday to Friday from 9.00 a.m.
to 12.00 o'clock and from 2.00 p.m.
to 5.00 p.m.

European Affairs Library

CERNE – “Casa da Europa na Madeira”

Rua Latino Coelho, 57, 3º - Funchal

Monday to Friday from 9.00 a.m. to
12.30 p.m. and from 2.00 p.m. to 5.30 p.m.

Funchal's Information and Documentation Centre

Regional Directorate of Youth

Rua 31 de Janeiro, 79 – Funchal

Monday to Friday from 9.30 a.m.
to 8.00 p.m.
Saturdays from 9.00 a.m. to 12.30 p.m.

Investigation and Documentation Centre

Madeira's Department of Artistic
Education

Travessa do Nogueira, 11 – Funchal

Documentation Centre specialised in Music, Education and Arts

Monday to Friday from 9.00 a.m.
to 12.30 p.m. and from 2.00 p.m.
to 5.30 p.m.

Fernando Augusto Theatre-theca

Theatre and Performative Art's Library -
Teatro Experimental do Funchal

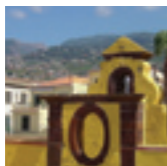
Rua do Hospital Velho, 42 – Funchal

Monday to Friday from 4.00 p.m.
to 7.00 p.m.

(Book in advance: Tel. 291226747)



museums



Contemporary Art Museum

Rua do Portão de São Tiago - Funchal

Monday to Saturday from 10.00 a.m.
to 12.30 p.m. and from 2.00 p.m.
to 5.30 p.m.

Madeira Ethnographic Museum

Rua de São Francisco 24 - Ribeira Brava

Tuesday to Sunday from 10.00 a.m.
to 12.30 p.m. and from 2.00 p.m.
to 6.00 p.m.

Christopher Columbus House, Porto Santo Museum

Travessa da Sacristia, 2 e 4 – Porto Santo

Tuesday to Saturday from 10.00 a.m. to
12.30 p.m. and from 2.00 p.m. to 5.30 p.m.
Sundays from 10.00 a.m. to 1.00 p.m.

www.museucolombo.portosanto.com



Museum of Sacred Art

Rua do Bispo 21 – Funchal

Tuesday to Saturday from 10.00 a.m.
to 12.30 p.m. and from 2.30 p.m. to 6.00 p.m.
Sundays from 10.00 a.m. to 1.00 p.m.

Photography - Vicentes Museum

Rua da Carreira 43 - 1º - Funchal

Monday to Friday from 10.00 a.m.

to 12.30 p.m. and from 2.00 p.m. to 5.00 p.m.

House-Museum Frederico de Freitas

Calçada de Santa Clara 7 - Funchal

Tuesday to Saturday from 10.00 a.m.

to 12.30 p.m. and from 2.00 p.m. to 5.30 p.m.

Sundays from 10.00 a.m. to 12.30 p.m.



Quinta das Cruzes Museum

Calçada do Pico 1 - Funchal

Tuesday to Saturday from 10.00 a.m.

to 12.30 p.m. and from 2.00 p.m. to 5.30 p.m.

Sundays from 10.00 a.m. to 1.00 p.m.

Universe of Memories - João Carlos Abreu

Calçada do Pico, 2 - Funchal

Tuesday to Saturday from 10.00 a.m.

to 5.00 p.m.

Sundays from 10.00 a.m. to 12.00 o'clock

Mário Barbeito de Vasconcelos Library Museum

Avenida Arriaga, 48 – Funchal

Monday to Friday from 10.00 a.m.

to 6.30 p.m.

Saturday from 10.00 a.m. to 1.00 p.m.

São Francisco Wine Cellars

Avenida Arriaga, 28 – Funchal

Whale Museum

Largo Manuel Alves - Caniçal

Tuesday to Sunday from 10.00 a.m.

to 12.00 o'clock and from 1.00 p.m.

to 6.00 p.m.

Natural History Museum

Quinta do Meio / Bom Sucesso

– Funchal

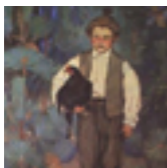
Monday to Sunday from 9.00 a.m.
to 5.30 p.m.



Sugar Museum

Praça Colombo, 5 - Funchal

Monday to Friday from 10.00 a.m.
to 12.30 p.m. and from 2.00 p.m. to 6.00 p.m.



Henrique and Francisco Franco Museum

Rua João de Deus, 13 - Funchal

Monday to Friday from 10.00 a.m.
to 12.30 p.m. and from 2.00 p.m. to 6.00 p.m.

São Lourenço Palace

Avenida Zarco – Funchal

Wednesday at 10.00 a.m.;

Friday at 3.00 p.m.;

Saturday at 11.00 a.m.;

(Visits on different day and hours must be
booked in advance)

Madeira Wine Institute

Closed

www.sra.pt/ivm

Embroidery Museum

Rua Visconde Anadia, 44 – Funchal

Monday to Friday from 10.00 a.m.
to 12.30 p.m. and from 2.00 p.m. to 5.30 p.m.

Municipal Museum of Funchal

Palácio de São Pedro

Rua da Mouraria, 31 – Funchal

Tuesday to Friday from 10.00 a.m.
to 6.00 p.m.

Saturdays, Sundays and Bank Holidays
from 12.00 o'clock to 6.00 p.m.

Mary Jane Wilson Museum

Rua do Carmo, 61 – Funchal

Tuesday to Friday from 10.00 a.m.
to 12.00 o'clock and from 3.00 p.m.
to 5.00 p.m.

Saturday from 10.00 a.m. to 12.00 o'clock

Last Sunday of the month from 3.00 p.m.
to 5.00 p.m.

Toy Museum

Rua da Levada dos Barreiros, 48
– Funchal

Tuesday to Saturday from 10.00 a.m.
to 6.00 p.m.

Sundays from 10.00 a.m. to 1.30 p.m.

Electricity Museum - Casa da Luz

Rua da Casa da Luz, 2 – Funchal

Tuesday to Saturday from 10.00 a.m.

to 12.30 a.m. and from 2.00 p.m. to 6.00 p.m.

Santa Clara Convent

Calçada de Santa Clara, 15 - Funchal

Monday to Saturday from 10.00 a.m.

to 12.00 o'clock and from 3.00 p.m.

to 5.00 p.m.

Sundays from 10.00 a.m. to 12.00 o'clock



Military Museum

Avenida Zarco – Funchal

Monday to Saturday from 9.30 a.m.

to 12.00 o'clock and from 2.00 p.m.

to 5.30 p.m.



Monte Palace Museum

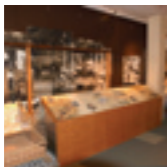
Caminho das Babosas, 4 – Funchal

Monday to Sunday: 10.30 a.m. to 3.30 p.m.

www.montepalace.com

Vineyard and Wine Museum of Arco de São Jorge

Sítio da Lagoa - Arco de São Jorge
Tuesday to Sunday from 10.30 a.m.
to 5.30 p.m.
Monday morning - by reservation



Madeira Story Centre

Rua D. Carlos I, 27 e 29 - Funchal
Monday to Sunday from 9.00 a.m.
to 7.00 p.m.
www.storycentre.com



thematic centres

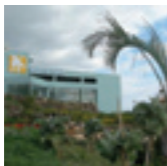


Madeira Theme Park

Sítio da Fonte da Pedra - Santana
Open everyday from 10.00 a.m. to 7.00 p.m.
www.parquetemáticodamadeira.pt

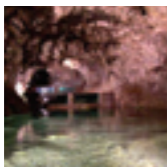
Centre of Life Science

Rotunda do Ilhéu Mole - Porto Moniz
Tuesday to Sunday 10.00 a.m. to 7.00 p.m.
www.ccvportomoniz.com



Madeira Magic Centre

Rua da Ponta da Cruz, 25 – Funchal
Tuesday to Friday from 10.00 a.m.
to 6.00 p.m.
Saturdays and Sundays from 10.00 a.m.
to 6.00 p.m.
www.madeiramagic.com



São Vicente Caves and Volcanism Centre

Sítio do Pé do Passo - São Vicente
Open everyday from 10.00 a.m. to 7.00 p.m.
www.grutasecentrodivulcanismo.com

Madeira Aquarium

Rua do Forte de São João Baptista
- Porto Moniz
Open everyday from 10.00 a.m. to 6.00 p.m.

Cover

Detail

Drawing by João Tengarrinha

Back Cover

Detail

**3rd International Cinema Festival
of Funchal**

cultural agenda
NOVEMBER .07

Edition

Direcção Regional dos Assuntos Culturais

Rua dos Ferreiros, 165

9004-520 Funchal

E-mail: drac@netmadeira.com

Contacts

E-mail: agenda.drac@iol.pt

Tel.: 291 211 830 / 96 7819284

Fax: 291 237 136

Design Als Design

Printing Grafmadeira

Print Run 500 copies

The Department of Cultural Affairs is entirely responsible for all enclosed information.

Programme changes might occur due to unforeseen reasons.

3º FESTIVAL INTERNACIONAL DE CINEMA DO FUNCHAL

PLANO XXX
Município de Funchal

Madeira 2007
2 a 10 de Novembro
Teatro Baltazar Dias


FUNCHAL
Município de Funchal


500
FUNCHAL
500 ANOS DE FUNCHAL